

# EMI Software ES-K1

Automation of EMI measurements with R&S instruments:

Test Receiver Families

ESCS, ESS, ESHS, ESVS, ECP

Analyzer Families

ESI7, ESI26, ESI40

ESAI, ESBI, ESMI

Family ESH3, ESVP, EZM

## Brief description

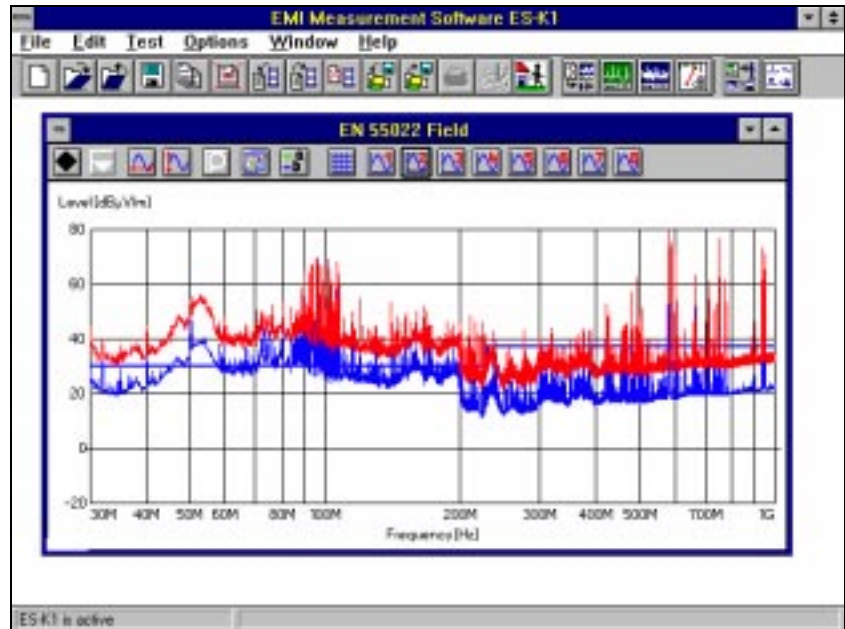
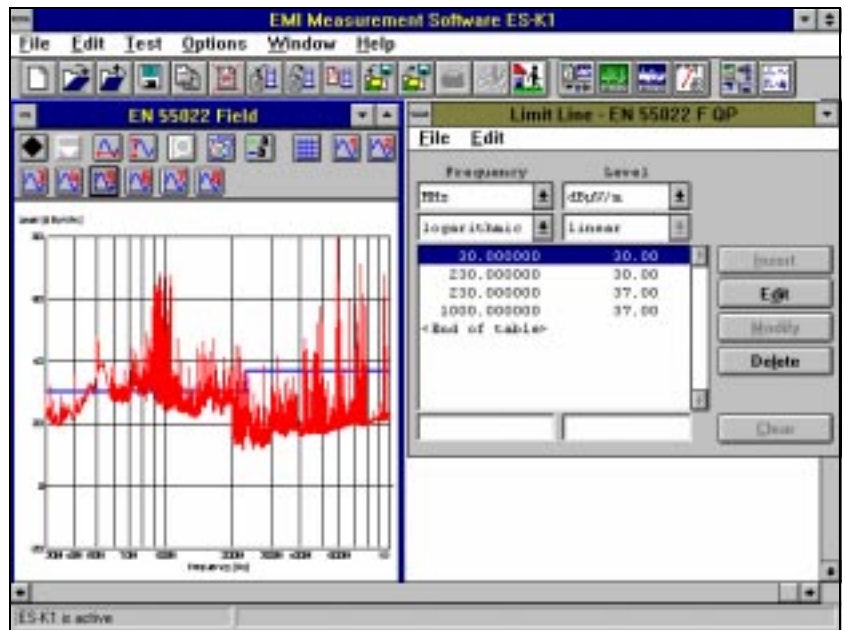
EMI Software ES-K1 is a versatile, efficient and user-friendly tool for fully automatic measurement of conducted and radiated emissions to international commercial and military standards such as CISPR, VDE, FCC, EACL, ANSI, EN; MIL, VG, DEF-STAN, GAM-EG13.

Offering various drivers, the software not only supports EMI test receivers and EMI spectrum analyzers from Rohde&Schwarz, but also a large variety of accessories:

- Mast and turntable system for measurement of RFI field strength
- Artificial mains networks and absorbing clamp slideways for measurement of conducted emissions
- Matrix for switching over antennas and transducers

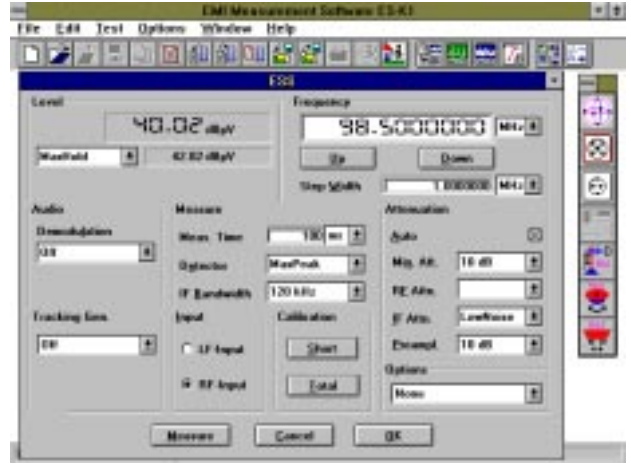
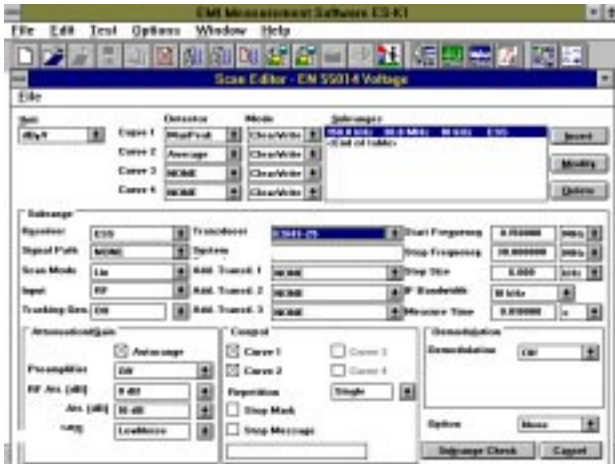
## Main features

- User-friendly EMI test software under Windows



- EMI measurements to commercial and military standards
- Adaptation to other standards
- Integrated database
- User-group-specific data allocation
- Fully automatic operation or interactive single measurement
- Automatic compensation of transducers (correction factors) and limit lines
- Large choice of data reduction methods
- Azimuth chart test
- Evaluation of narrowband/broad-band interferers
- Test setup calibration
- Convenient and flexible result documentation and report generation

# EMI Software ES-K1



- Universal data storage
- Hardlock key (dongle) for authentication
- Network-compatible

## Test runs

Depending on the application and use of the software, control of the test runs is either fully automatic or interactive. By loading automatic test routines defined in the form scripts, measurements can be started simply at the press of a button without any time-consuming entries. The scripts control the test run, evaluate the results and generate the necessary test reports. In addition to standard scripts, user-spe-

cific scripts can be generated and existing scripts modified (option ES-K2).

A database is integrated in ES-K1 for management of the measured data or of the result files derived with the aid of comprehensive test and evaluation routines. The convenient access to these files with informative short descriptions does away with tiresome file searching.

Versatile and flexible result display is possible in the form of tables or graphs. A maximum of eight test results, limit lines and transducer factors can be displayed simultaneously.

A zoom function allows enlargement of any parts of the result display.

## Report generation

The script run generates a user-configured report which combines the test results in an informative documentation. Another way of generating the reports is by automatic data exchange between the Windows programs, the DDE function implemented in ES-K1 allowing both graphs and texts to be exported from ES-K1 and copied into the user-generated test report wherever desired. For the hardcopy of the test reports all printers and plotters supported by Windows are suitable.

## Hardware requirements

PC fully compatible with Windows 3.x/95/98/NT with a minimum of 8-MByte RAM; minimum memory capacity on hard disk 8 Mbyte; IEC/IEEE-bus interface with Windows driver (DLL), compatible with National Instruments IEEE-Bus Interface. Recommended: Process Controller PSM

## Ordering information

EMI Software ES-K1 1026.6790.02  
(Windows program with driver for Artificial Mains Networks ESH2-Z5, ESH3-Z5 and Relay Matrixes PSU, RSU and PSN)

Script Development Kit ES-K2 1026.6890.02

### Drivers for Test Receivers and Spectrum Analyzers

ESHS, ESVS, ESVD, ESCS, ESPC	ES-K10	1026.6948.02
ESS	ES-K11	1026.7096.02
ESAI, ESBI, ESMI	ES-K12	1026.7144.02
ESH3, ESVP	ES-K13	1062.3497.02
ESH3, ESVP, EZM	ES-K14	1062.3597.02
ES17, 26, 40	ES-K16	1108.0288.02

### Drivers for accessories

Mast HCM and Turntable HCT	ES-K30	1026.7196.02
Absorbing Clamp Slideway HCA	ES-K31	1026.7921.02
EMCO Controller/Mast/Turntable 1050/1060/1090/2090	ES-K32	1062.3697.02
User specific IEC/IEEE-Bus Driver	ES-K50	1057.2496.02
Multi-User Licence	ES-K100	1057.0741.02